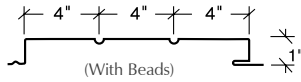
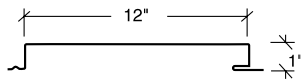
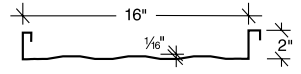


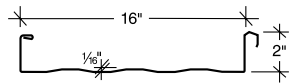
Architectural Panel Profiles



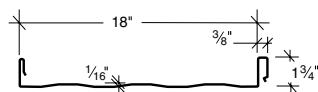
Artisan® Series



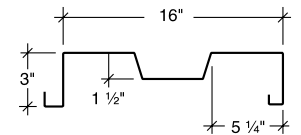
BattenLok® HS
Field Seamed System



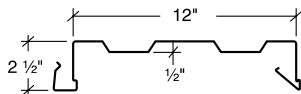
SuperLok®
Field Seamed System



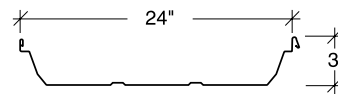
LokSeam®
Snap-Together System



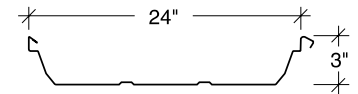
ShadowRib®
Wall Panel



NuWall®
Wall Panel



Ultra-Dek®
Snap-Together System



Double-Lok®
Field Seamed System

	Signature® 300 & Signature® 300 Metallic		Galvalume® Plus		
	24 GA.	22 GA.	26 GA.	24 GA.	22 GA.
Artisan® Series					
8" Wide	■	■	●	●	●
10" Wide	■	■	●	●	●
12" Wide	■	■	●	●	●
BattenLok® HS					
12" Wide	■	■		●	●
16" Wide	■	■		●	●
LokSeam®					
12" Wide	■	■	●	●	●
16" Wide	■	■		●	●
18" Wide	■	■		●	●
NuWall®					
12" Wide	■	■	●	●	●
ShadowRib®					
16" Wide	■	■		●	●
SuperLok®					
12" Wide	■	■	●	●	●
16" Wide	■	■	●	●	●
Ultra-Dek®					
12" Wide	■	■	●	●	●
18" Wide	■	■	●	●	●
24" Wide	■*	■	●	●	●
Double-Lok®					
12" Wide	■	■		●	●
18" Wide	■	■		●	●
24" Wide	■*	■		●	●

● Available in any quantity. Other colors, finishes, gauges and materials available — please inquire!

■ Minimum quantity may be required.

* Signature® 200 White available in any quantity.

- Final color selection should be made from actual color chips.
- See product selection chart for gauge and color availability.
- All products available in smooth or embossed finish.
- Heavier gauges, narrower widths, striations and embossing minimize "oil canning."
- All Signature® 300 and 300 Metallic are low gloss colors.

- Polar White is a Straight Polyester.
- A 25-year limited paint warranty available for all colors upon written request except for Scarlet Red, please inquire. (Outside the continental United States, please inquire.)
- * This color is California Title 24 compliant. Availability in certain areas may be restricted or require a surcharge.

- Signature® is a registered trademark of NCI Group, Inc. KYNAR 500® is a registered trademark of Arkema, Inc. HYLAR 5000® is a registered trademark of Solvay Solexis.

